

# AQUASUSTAIN - DHP MEV

# OSO



An environmentally friendly, highly efficient hot water cylinder with integrated heat pump for heating the hot water

## SAP

A+ energy rating enables SAP compliance  
NCM (SAP) identifier 200 - 108965  
NCM (SAP) identifier 200 - 108964

## Eco Friendly

Future solution with refrigerant gas R290 (GWP 3). Ozone Depletion Potential is zero.

## Heats to 60°C via heat pump

Legionella safe, more hot water produced and does not require immersion to achieve 60°C

## Touchscreen

Tactile and intuitive for the user, with a 5 inch screen.  
Very user friendly

## Fast and easy installation

Created to meet the needs of users and installers, it has been designed to facilitate simple installation and commissioning.

## Build Quality

Stainless steel cylinder, cosmetic outer case and back up immersion heater.



Internal air intake MEV



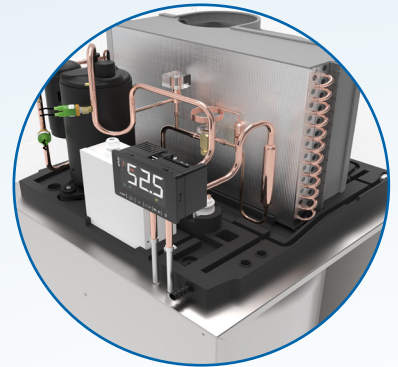
External air intake

Air can be ducted from inside or outside

# Technical information

Model	200 DHP	260 DHP
<b>Cylinder</b>		
Dimensions (H x W x D)mm	1540x584x624	1907x584x624
Capacity (L)	200	260
Heat loss (kWh/24h)	1.57	1.90
Heat loss (W)	67	73
Heat up time ECO Mode (Heatpump only) (Min)	372	517
Maximum operating pressure (bar)	6	
Product weight (Kg)	80	92
Weight full (Kg)	280	352
Package weight (Kg)	87.5	100
Heat exchanger (m <sup>2</sup> )	0.39	0.39
<b>Heat pump</b>		
Load profile	L	XL
Heating power range (W)	1005-1750	
Annual electricity consumption (cold climate) kWh	1094	1576
Annual electricity consumption (average climate) kWh	830	1255.3
Annual electricity consumption (warm climate) kWh	772	1143
Power input range (W)	405-500	
Water heating energy efficiency, cold climate(%)	94	106
Water heating energy efficiency, average climate(%)	133	142
Water heating energy efficiency, warm climate(%)	133	147
COP (average climate)	2.95	3.24
COP (warm climate)	3.16	3.55
Efficiency class	A+	
Ambient temperature range (°C)	-10/40	
DHW temperature range(°C)	35/60	
Default DHW temperature with HP(°C) ECO/AUTO	55/60	
Refrigerant/Charge (g)	R290/150	
Sound power (dB(A))	53	
Sound pressure at 2m (dB(A)) High speed	45.9	
Sound pressure at 2m (dB(A)) Low speed	41	
<b>Auxiliary electric heater</b>		
Power (W)	1500	
Maximum power consumption with electric heater (W)	2000	
Maximum temperature with electric heater (°C)	70	
<b>Air data</b>		
Minimum air flow (m <sup>3</sup> /h) (External air supply)	215	
Minimum air flow (m <sup>3</sup> /h) (Internal air supply)	190	
Maximum flow rate (m <sup>3</sup> /h) - Low speed	370	
Maximum flow rate (m <sup>3</sup> /h) - High speed	438	
Static Pressure drop(Pa) - Low speed internal*/external**	115/100	
Static Pressure drop(Pa) - High speed internal*/external**	246/220	
Diameter of connection (mm)	150-160-200	
<b>Connections</b>		
Power supply v/ph/Hz	230/1/50	
Inlet/outlet/recirculation water connections (inch)	3/4	
Hydraulic connection safety valve / T&P (inch)	1/2	
<b>NCM (SAP) Identifier</b>		
NCM (SAP) identifier 200	108965	
NCM (SAP) identifier 260	108964	

\* intake ducting from inside (MEV) \*\* intake ducting from outside only



Aquasustain is described on government database by searching in any of the following categories

Heat Pump Category - Exhaust Air MEV  
 Service Provision - Water heating only  
 Brand name - OSO Hotwater

OSO HOTWATER LTD  
 Phone: (0191) 482 0800 - Tech support: call (0191) 4827049  
 E.mails: technical.uk@oso-hotwater.co.uk - sales.uk@oso-hotwater.co.uk  
 Spare parts: visit [www.oso-spares.co.uk](http://www.oso-spares.co.uk)  
 Web: [osohowater.co.uk](http://osohowater.co.uk)